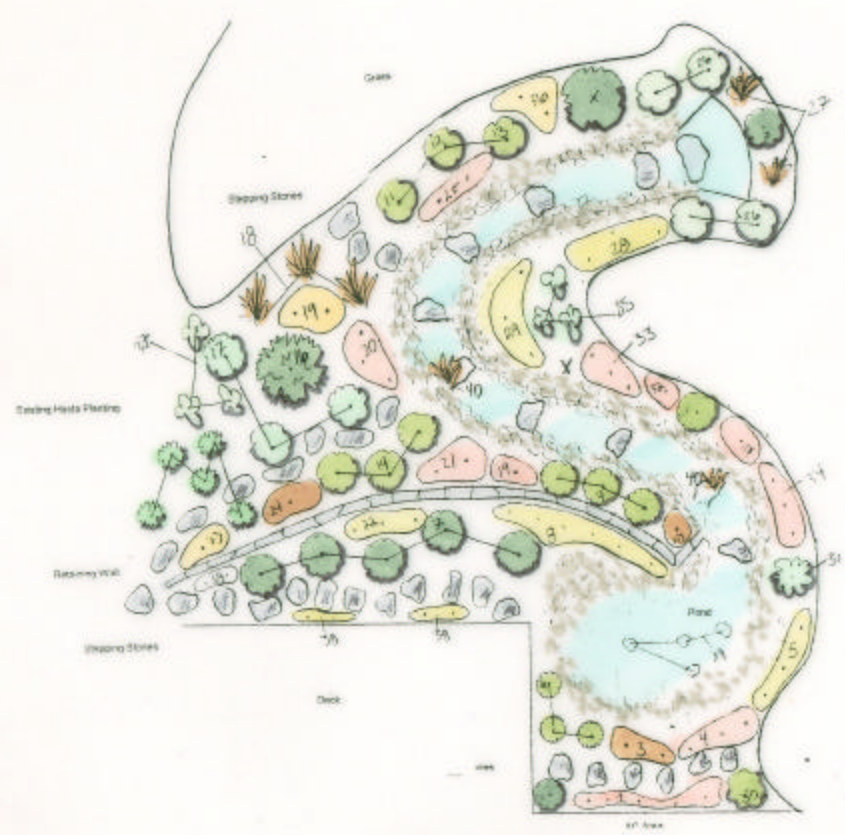


Plant Key

ID	Name	Scientific Name	Plant Type	Height	Spread	Seasonal Interest
1	Common Redbud	<i>Koeleria coccinea</i>	Shrub	12'	12'	Spring
2	Cherry Blossom	<i>Prunella coccinea</i>	Shrub	12'	12'	Spring
3	Red Maple	<i>Acer rubrum</i>	Tree	20'	20'	Spring
4	White Birch	<i>Betula papyrifera</i>	Tree	20'	20'	Spring
5	Black Birch	<i>Betula nigra</i>	Tree	20'	20'	Spring
6	White Birch	<i>Betula papyrifera</i>	Tree	20'	20'	Spring
7	Black Birch	<i>Betula nigra</i>	Tree	20'	20'	Spring
8	White Birch	<i>Betula papyrifera</i>	Tree	20'	20'	Spring
9	Black Birch	<i>Betula nigra</i>	Tree	20'	20'	Spring
10	White Birch	<i>Betula papyrifera</i>	Tree	20'	20'	Spring
11	Black Birch	<i>Betula nigra</i>	Tree	20'	20'	Spring
12	White Birch	<i>Betula papyrifera</i>	Tree	20'	20'	Spring
13	Black Birch	<i>Betula nigra</i>	Tree	20'	20'	Spring
14	White Birch	<i>Betula papyrifera</i>	Tree	20'	20'	Spring
15	Black Birch	<i>Betula nigra</i>	Tree	20'	20'	Spring
16	White Birch	<i>Betula papyrifera</i>	Tree	20'	20'	Spring
17	Black Birch	<i>Betula nigra</i>	Tree	20'	20'	Spring
18	White Birch	<i>Betula papyrifera</i>	Tree	20'	20'	Spring
19	Black Birch	<i>Betula nigra</i>	Tree	20'	20'	Spring
20	White Birch	<i>Betula papyrifera</i>	Tree	20'	20'	Spring
21	Black Birch	<i>Betula nigra</i>	Tree	20'	20'	Spring
22	White Birch	<i>Betula papyrifera</i>	Tree	20'	20'	Spring
23	Black Birch	<i>Betula nigra</i>	Tree	20'	20'	Spring
24	White Birch	<i>Betula papyrifera</i>	Tree	20'	20'	Spring
25	Black Birch	<i>Betula nigra</i>	Tree	20'	20'	Spring
26	White Birch	<i>Betula papyrifera</i>	Tree	20'	20'	Spring
27	Black Birch	<i>Betula nigra</i>	Tree	20'	20'	Spring
28	White Birch	<i>Betula papyrifera</i>	Tree	20'	20'	Spring
29	Black Birch	<i>Betula nigra</i>	Tree	20'	20'	Spring
30	White Birch	<i>Betula papyrifera</i>	Tree	20'	20'	Spring
31	Black Birch	<i>Betula nigra</i>	Tree	20'	20'	Spring
32	White Birch	<i>Betula papyrifera</i>	Tree	20'	20'	Spring
33	Black Birch	<i>Betula nigra</i>	Tree	20'	20'	Spring
34	White Birch	<i>Betula papyrifera</i>	Tree	20'	20'	Spring
35	Black Birch	<i>Betula nigra</i>	Tree	20'	20'	Spring
36	White Birch	<i>Betula papyrifera</i>	Tree	20'	20'	Spring
37	Black Birch	<i>Betula nigra</i>	Tree	20'	20'	Spring
38	White Birch	<i>Betula papyrifera</i>	Tree	20'	20'	Spring
39	Black Birch	<i>Betula nigra</i>	Tree	20'	20'	Spring
40	White Birch	<i>Betula papyrifera</i>	Tree	20'	20'	Spring
41	Black Birch	<i>Betula nigra</i>	Tree	20'	20'	Spring
42	White Birch	<i>Betula papyrifera</i>	Tree	20'	20'	Spring
43	Black Birch	<i>Betula nigra</i>	Tree	20'	20'	Spring
44	White Birch	<i>Betula papyrifera</i>	Tree	20'	20'	Spring
45	Black Birch	<i>Betula nigra</i>	Tree	20'	20'	Spring
46	White Birch	<i>Betula papyrifera</i>	Tree	20'	20'	Spring
47	Black Birch	<i>Betula nigra</i>	Tree	20'	20'	Spring
48	White Birch	<i>Betula papyrifera</i>	Tree	20'	20'	Spring
49	Black Birch	<i>Betula nigra</i>	Tree	20'	20'	Spring
50	White Birch	<i>Betula papyrifera</i>	Tree	20'	20'	Spring



PAHL'S MARKET
Landscape and Design

6865 160th Street • Apple Valley, MN 55124
952.431.4345 • Fax 952.431.4089
www.pahls.com

Jon George
PROJECT: 13645 Hannibal Circle
Apple Valley, MN 55124
DESIGNER: Lanny Sekines

DATE: June 3rd 2005
SCALE: 1/4"=1'

